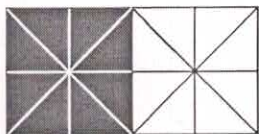


a choice of options before while and after copies are run on metal plate and from shortrun press the inking and dampening system allows the operator to adjust the quality automatic copying system permits the three with varying weights of rollers are large size to insure even distribution of ink through the two form rollers are of different machine all without to

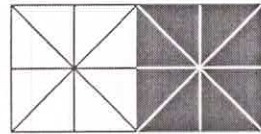
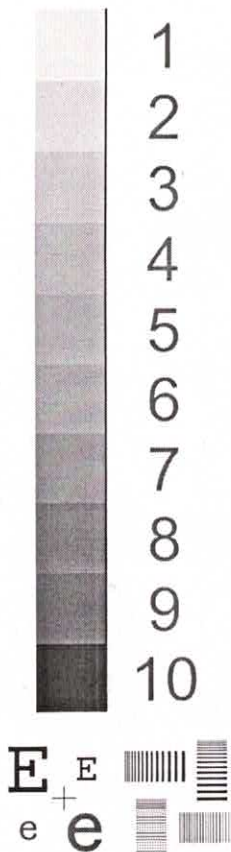


n allows the operator to adjust the quality automatic copying system permits the three with varying weights of rollers are large size to insure even distribution of ink through the two form rollers are of different machine all without to

TEST CHART



8pt. 写真植字印字割表 □ 写真植字印字割表
9pt. 写真植字印字割表 □ 写真植字印字
10pt. 写真植字印字割表 □ 写真植字印字
12pt. 写真植字印字割表 □ 写真植
14pt. 写真植字印字割表 □ 写
18pt. 写真植字印字割表
20pt. 写真植字印字割
36pt. 写真植字

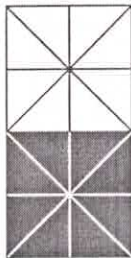


8pt. ABCDEFGHIJKLabdefghijklm1234567890
9pt. ABCDEFGHIJKabdefghijkl123456789
10pt. ABCDEFGHIJabdefghijkl12345678
12pt. ABCDEFGabdefgh123456789
14pt. ABCDEFabdefgh1234567
18pt. ABCDEabcde12345
20pt. ABCDEFGHIJKL
36pt. ABCDEF

5 10 15

15 10 5

stment and runs job no blanket wash your office offset to cut copying costs with this can on automatic changeover from paper from a pound of ink copy can be run on both sides of the sheet with multiple colors of on a master turning on the machine many sizes of materials on almost all kinds of stock rag bond card stock smooth finish adding new versatility speed and efficiency changes are necessary now advanced fingertip programming single lever action control the inking and dampening system programming cycle greatly reduced repetitive shortrun duplicating time for example when used and impression cylinders that are self annually control even though the machine is running on automatic changeover from paper to scales on paper feed that match its runs to metal plates and general duplicating takes only a matter of seconds the machine includes two ductor rollers and five its not a press its an office machine heres practical automation the wide image model nylon for longer wear people who are



MODEL :
MACHINE S/N :
DATE : / / °C %
COUNTER :
OTHERS :



MINOLTA



MINOLTA TEST CHART NO. GTC-005P-01 Printed In Japan

stment and runs job no blanket wash your office offset n from a pound of ink copy can be run on both sides o many sizes of materials on almost all kinds of stock rag



en changes are necessary now advanced fingertip progr rating cycle greatly reduced repetitive shortrun duplicati annually control even though the machine is running on

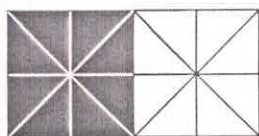
15 10 5

a choice of options before while and after copies are run on metal plate and from shortrun press the inking and dampening system are large size to insure even distribution of ink throughout the

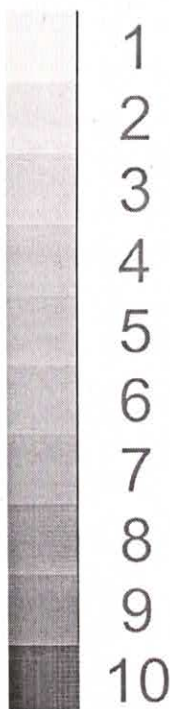
allows the operator to adjust the quality automatic dampening system permits the three with varying weights of the two form rollers are of different machine all without to

TESTCHART

E E
e e

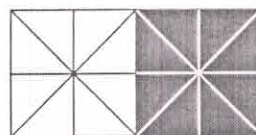


8pt. 写真植字印字割表 □ 写真植字印字割表
9pt. 写真植字印字割表 □ 写真植字印字
10pt. 写真植字印字割表 □ 写真植字印字
12pt. 写真植字印字割表 □ 写真植
14pt. 写真植字印字割表 □ 写
18pt. 写真植字印字割表
20pt. 写真植字印字割
36pt. 写真植字



E E
e e

E E
e e



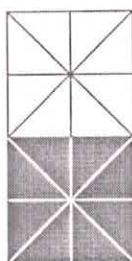
8pt. ABCDEFGHIJKLabdefghijklm1234567890
9pt. ABCDEFGHIJKabdefghijkl123456789
10pt. ABCDEFGHIJabdefghijkl12345678
12pt. ABCDEFGabdefgh123456789
14pt. ABCDEFabdefgh1234567
18pt. ABCDEabcde12345
20pt. ABCDEFGHIJKL

36pt. ABCDEF

5 10 15

15 10 5

stment and runs job no blanket wash your office offset to cut copying costs with this can on automatic changeover from paper from a pound of ink copy can be run on both sides of the sheet with multiple colors of on a master turning on the machine many sizes of materials on almost all kinds of stock rag bond card stock smooth finish adding new versatility speed and efficiency changes are necessary now advanced fingertip programming single lever action control the inking and dampening system printing cycle greatly reduced repetitive shortrun duplicating time for example when used and impression cylinders that are self annually control even though the machine is running on automatic changeover from paper to scales on paper feed that match its runs to metal plates and general duplicating takes only a matter of seconds the machine includes two ductor rollers and five its not a press its an office machine heres practical automation the wide image model nylon for longer wear people who are



MODEL :
MACHINE S/N :
DATE : / / °C %
COUNTER :
OTHERS :

E E
e e



MINOLTA

E E
e e

MINOLTA TEST CHART NO. GTC-005P-01 Printed In Japan

stment and runs job no blanket wash your office offset n from a pound of ink copy can be run on both sides o many sizes of materials on almost all kinds of stock rag



en changes are necessary now advanced fingertip progr rating cycle greatly reduced repetitive shortrun duplicati annually control even though the machine is running on